

Media Release:



2014 International Photographer in Residence Appointed

Kindly Sponsored by:

LE MASURIER
Established 1835

one
Foundation

The search for Jersey's second International Photographer in Residence is over and we are delighted to announce the appointment of Yury Toroptysov who will be working in Jersey for six months from April-September 2014.

Born in 1974 in a rural community near Vladivostok, Yury Toroptysov left his native Russia in 1998 to study at the New School for Social Research in New York as a Muskie Fellow. Nourished by his Far-Eastern origins, American travels and the current residence in Europe, Yury Toroptysov keeps at the core of his work what constitutes a common denominator for those distant cultures: people and their identity and the permanence of myths. Memories, metamorphosis, profane and sacred are the recurring themes in his photographs. Toroptysov lives and works in Paris. His photographs have been featured in numerous solo and group shows including at the Maison Européenne de la Photographie in Paris (2008), Moscow House of Photography (2013) and Le Bal, Paris (2011). His first book, *Marilyn and I* was published by Verlhac Editions in 2011. Yury Toroptysov is represented by Galerie Photo 12, Paris.

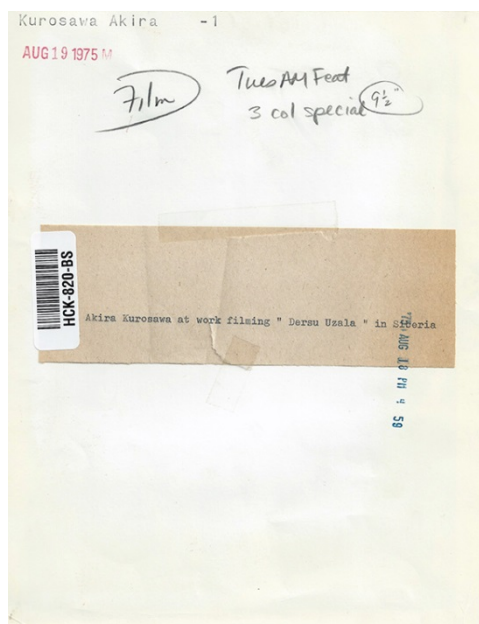
Archisle Project Leader Gareth Syvret said: 'It is tremendous that an artist of Yury Toroptysov's quality will be living, educating and making new work about Jersey in 2014. At its heart the Archisle project is about plugging Jersey into the international contemporary photography scene. Yury's residency gives Jersey a great opportunity to benefit from his experience of international cultures and contemporary photography communities.'

Rod McLoughlin, One Foundation Council Member commented: 'The first residency project made an enormous impact culturally in the Island, engaging with a wide range of students and more experienced photographers, inspiring them to think and work in new ways; it also raised the profile of photography among the wider public, culminating in a really marvellous exhibition. Yury Toroptysov's impressive achievements as a photographic artist suggest that he is the ideal choice to take forward the programme and we at the One Foundation are delighted to be associated with it again.'

Archisle: The Jersey Contemporary Photography Programme, hosted by the Société Jersiaise, promotes contemporary photography through an ongoing programme of exhibitions, education and commissions. The new residency awards a bursary of £10,000 for an exhibition of new work responding to the culture of the Island. A set of these works will enter the Société Jersiaise Photographic Archive for future public enjoyment.

Building upon the success of the community education programme delivered by the Archisle Photographer in Residence in year one in 2014 Yury will lead a dynamic series of workshops and projects with partner organisations including: Jersey schools, Highlands College, Youth Arts Jersey, Jersey Arts Centre, Jersey Arts Trust, Guernsey Photography Festival and others.

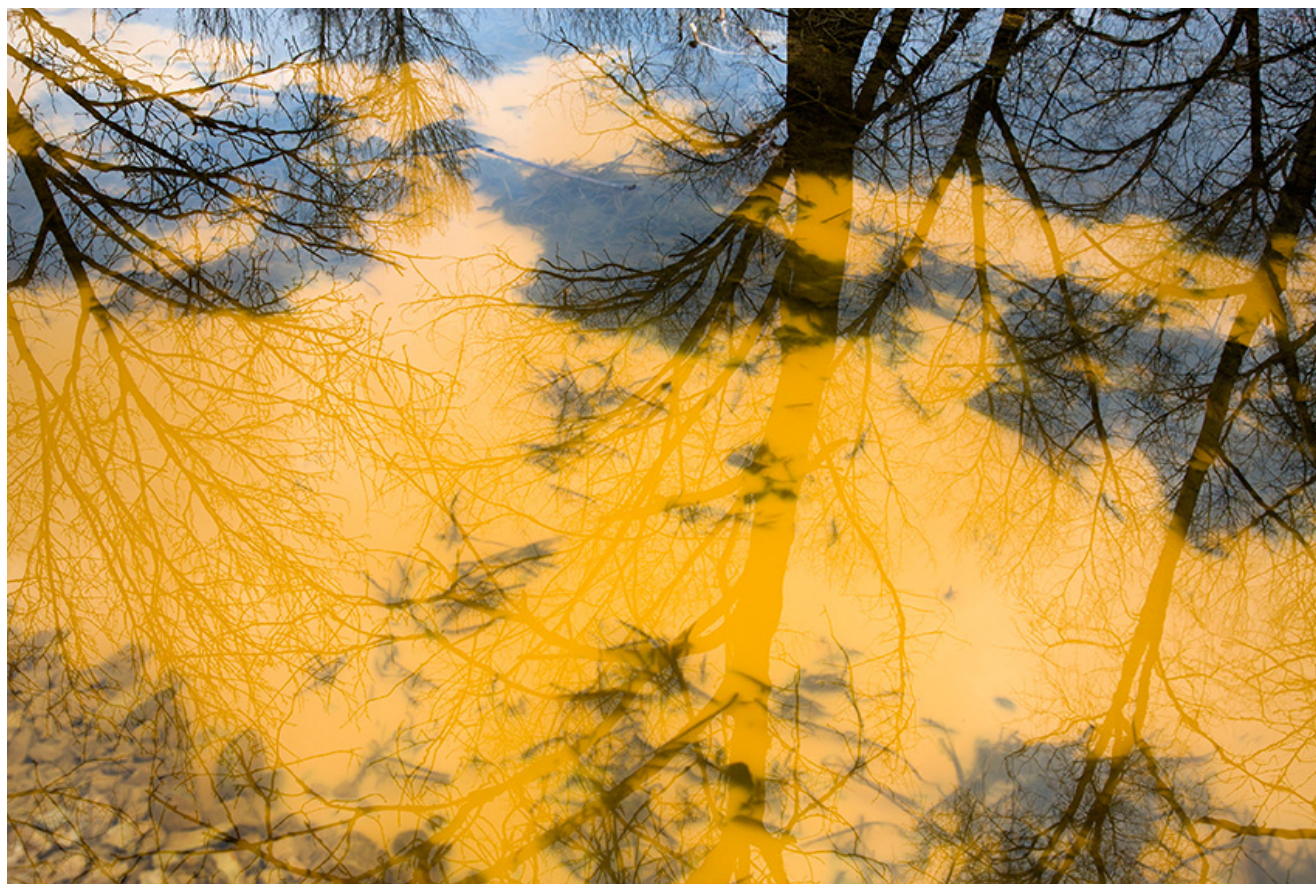
Brian McCarthy, Managing Director of Le Masurier commented: 'The 2013 International Photographer in Residence was an outstanding success and we are delighted to be sponsoring Yury's appointment for 2014. I am sure that Yury will provide a significant contribution to Jersey's educational and arts based facilities and organisation.'



02 – Deleted scene



03 – Deleted scene



04 – Deleted scene



- 01 – Frédéric Mitterrand, writer
- 02 – Exhibition view « Marilyn and I » at Le Bon Marché Rive Gauche (Paris)
- 03 – Elodie Frégé, singer



02



Photos courtesy of Galerie Photo 12 / Copyright Yury Toroptsov.



01 – Divine Retribution



01 - The House of Baba Yaga



02 – The House of Baba Yaga

Notes to Editors:

- For a portfolio/biography on Yury Toroptsov see: <http://www.toroptsov.com/> .
- Yury Toroptsov will be available for interview in Jersey on 27-29 January 2014.
- *Archisle*: The Jersey Contemporary Photography Programme, hosted by the Société Jersiaise, promotes contemporary photography through an ongoing programme of exhibitions, education and commissions.
- The *Archisle* project connects photographic archives, contemporary practice and experiences of island cultures and geographies through the development of a space for creative discourse between Jersey and international practitioners.

For further information contact Gareth Syvret on Tel. 633398 or email archisle@societe-jersiaise.org .

Ends